



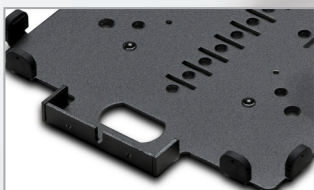
# iPad SafeGuard™ mounting solutions



Retail hardened tablet mounts

Multiple security features

Prevent abuse and theft of in-store tablets



when space matters

# iPad SafeGuard™ solutions

Camera access

Available in silver and black

Restricted access to home button

Anodised with a brush finish

Cable management



The global release of the iPad and other tablets has brought about a significant change in the way we include computers and mobile technology in our day-to-day lives. Tablets encourage a reassessment of the traditional approach to commercial technology integration, particularly within the retail industry.

Tablets offer quick and relatively cheap access to large processing power; they are easy to move around and require little space. Simple to upgrade and maintain, they provide a flexible alternative to existing retail technology solutions.

iPads were not originally designed for retail, so in order for the tablet to withstand the rigors of a hostile environment, mounting solutions must prioritise fea-

tures that enhance security and protect the tablets as well as the technology. The ideal design will protect the tablets from obvious threats such as abuse and theft. At the same time, the design must maintain the mobility and easy access for maintenance to preserve the advantages of the device and protect the investment.

It is a complex balancing act, but one that the new iPad SafeGuard solutions from Ergonomic Solutions manage perfectly. The SafeGuard solutions are specifically designed for retail and put product security first while combining an aesthetic design with a very high level of functionality. The iPad SafeGuard Solutions are available in two designs: The SafeGuard Clamps and SafeGuard Frame.

## MultiGrip™ plate technology

All SafeGuard Solutions feature the MultiGrip™ plate, proven in retail and an integral part of our product design.

- Patented friction pad design, ensuring the iPad is gripped securely
- The MultiGrip™ plate is simply positioned and screwed onto a DuraTilt™ joint
- Key hole design enabling the solution to be placed into any position on a DuraTilt™ joint



### The SafeGuard™ Frame

The SafeGuard Frame features the MultiGrip plate and comes in a brushed, anodised aluminium finish. The design prevents full access to the home button, the power button and volume controls. The SafeGuard Frame includes power and data cable protection along with peripheral key lock mounting options. The design takes the built in speakers neatly into account. The SafeGuard Frame comes with all fixings included.

### The SafeGuard™ Clamp

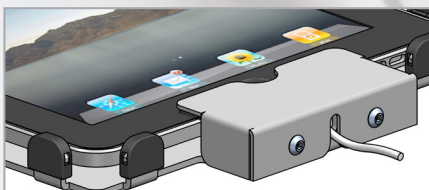
The SafeGuard Clamp is available in two designs with one common MultiGrip plate. One design comes with full access to the home button, while the other comes with restricted access to prevent any misuse. Both clamp designs include power and data cable protection along with peripheral key lock mounting options. All SafeGuard Clamps are powder coated, available in five standard colours and come with all fixings included.

### Mounting Options

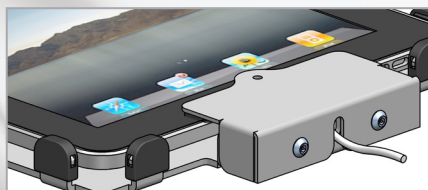
Complying with VESA 75/100 mounting standards, the SafeGuard solutions can easily be incorporated into the SpacePole Essentials Range and are suitable for either portrait or landscape positioning. Moreover, both the clamp and frame designs are suitable for DuraTilt desk mounting and can be wall mounted in either portrait or landscape position.

### WiFi tested

All SafeGuard solutions have been WiFi tested at one of Europe's leading WiFi testing facilities. The results fully support the claim that the iPad is fully functional in all tested configurations and that the total average performance of the iPad is not notably affected by either clamp or frame design. For more information about the test, please visit our website [spacepole.com](http://spacepole.com).



Full access clamp



Restricted access Clamp



Aluminium frame

# Specifications



SafeGuard™	Clamp	Clamp	Frame
Access to home button	●	◇	◇
Access to power button	◇	◇	◇
Access to volume controls	●	●	○
Power/data cable protection	●	●	●
Peripheral key lock mounting options	●	●	●
WiFi tested	●	●	●
5 year warranty	●	●	●
Fixings supplied	●	●	●
Powder coated finish (5 standard colours)	●	●	○
Anodised aluminium brushed finish	○	○	●
Access to external speakers/headphones	○	○	○
VESA 75/100 (portrait or landscape)	●	●	●
DuraTilt®, MultiGrip™ (portrait or landscape)	●	●	●
Wall mount (portrait or landscape)	●	●	●
Product no. (iPad)	SIPIC 111	SIPIC 112	SIPIC 212
Product no. (iPad 2)	SIPIC 121	SIPIC 122	SIPIC 222

● Full access/availability ○ No access/availability ◇ Limited access/availability

**NICCABI**

ニッキャビ株式会社

〒211-0051 川崎市中原区宮内2-5-8

TEL : 044-766-2111 FAX : 044-777-9000

URL <http://www.niccabi.co.jp>

E-mail [niccabi@niccabi.co.jp](mailto:niccabi@niccabi.co.jp)